



# ERP Dashboard

User Manual Version 1.0.0

Issue Date: 05/04/2011

## INDEX

<b>Introduction</b>	<b>- 3 -</b>
<b>Getting Started</b>	<b>- 3 -</b>
<b>Key Performance Indicators (KPIs)</b>	<b>- 3 -</b>
<b>Main Board</b>	<b>- 4 -</b>
Compare between 2 years:	- 4 -
Compare between Centers:	- 4 -
Compare between Locations:	- 5 -
User Settings	- 5 -
KPI Settings	- 5 -
Graph Type	- 6 -
Graph Colors	- 6 -
Clipboard	- 6 -

## Introduction

This document looks at how to use the Dashboard Window. Some screens demonstration is used to facilitate the explanations of processes.

This will help those who are new to the product, or those looking to expand the range of knowledge on how to maximize the use of the system to their benefit.

For further information, please visit Our ProactiveSoft web site or call our support team.

## Getting Started

Before customers can use the Dashboard, they need to login to the ERP system, customers can perform the following functions:

- Compare KPI by years or centers or locations month by month.
- Customize four main windows with selected KPI.
- Customize the graph type & colors.
- Copy one Graph to another application like Excel.

## Key Performance Indicators (KPIs)

Key Performance Indicators, also known as KPI or Key Success Indicators (KSI), help an organization define and measure progress toward organizational goals.

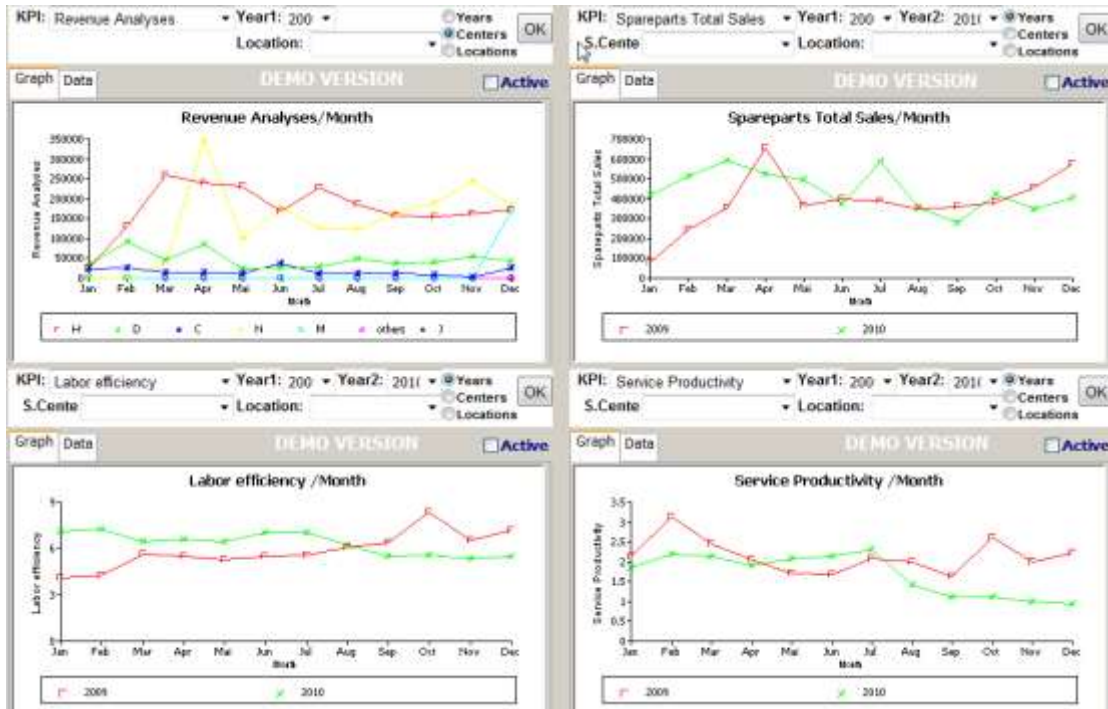
Once an organization has analyzed its mission, identified all its stakeholders, and defined its goals, it needs a way to measure progress toward those goals. Key Performance Indicators are those measurements.

Our Automotive ERP system provides Top Management with an advanced dashboard that illustrates the following KPIs in multi-dimensional graph presentation:

- Actual Clocked Hours
- Appointment Rate
- Available Hours - TS
- Bay utilization rate
- Cars In
- Cars Out
- Collection Volume
- Discount Volume - Total
- External Work - Total
- External Work - Warranty
- External Work - WS
- Labor Discount Volume
- Labor Efficiency
- Labor Sales - Customers
- Labor Utilization
- Labor Sales - Warranty
- Labor Sales - Total
- No of job order
- No of Reception Order
- No of Reservations
- No. of Units serviced per TS
- Over Time Hours
- Revenue Analyses
- Service Productivity
- Sold FRU's Customer
- Sold FRU's Warranty
- Sold Hours per RO
- Sold hours per TS
- SP Discount Volume
- Spare Parts Counter sales
- Spare Parts Warranty Sales
- Spare Parts WS Sales
- Spare parts Sales - Total
- Total Paid Hrs
- Total Sold FRU's
- Working hrs Customer
- Working hrs Warranty

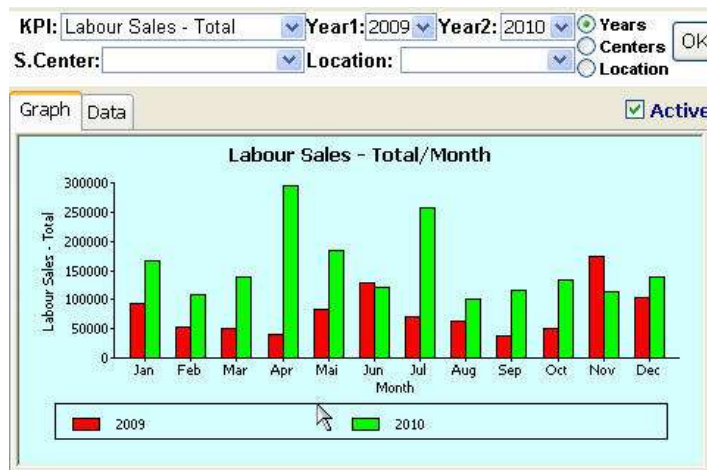
## Main Board

Main Board consists of four customized windows.



### Compare between 2 years:

You can select Year1 and Year2 then click OK to compare between them.  
You can also filter the result by one Center or one location only.



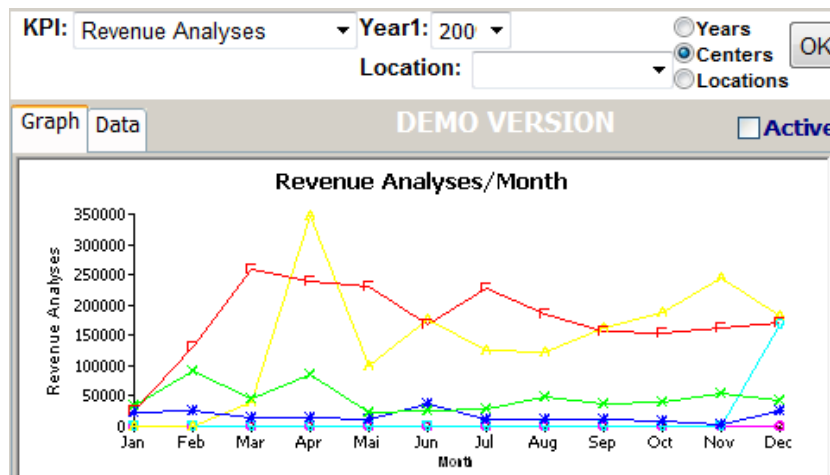
### Compare between Centers:

Select centers to compare between all centers.  
You can also filter the result by one location only from the dropdown menu.

### Compare between Locations:

Select locations to compare between all locations.

You can also filter the result by one service center only from the dropdown menu.



### User Settings

User can customize the default four windows KPI & criteria.

### KPI Settings

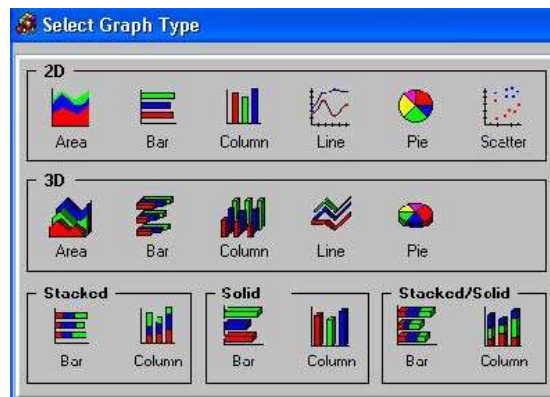
User can change the displayed KPI name & make it visible or not.

#	Kpi Name	Kpi Display Name	Last Date	Visible
1	Total Rented Value	Total Rented Value	01/04/2011	<input checked="" type="checkbox"/>
2	No of Cars	No of Cars	00/00/0000	<input checked="" type="checkbox"/>
3	Daily Rate	Daily Rate	00/00/0000	<input checked="" type="checkbox"/>

### Graph Type

User can change the Graph Type from this window.

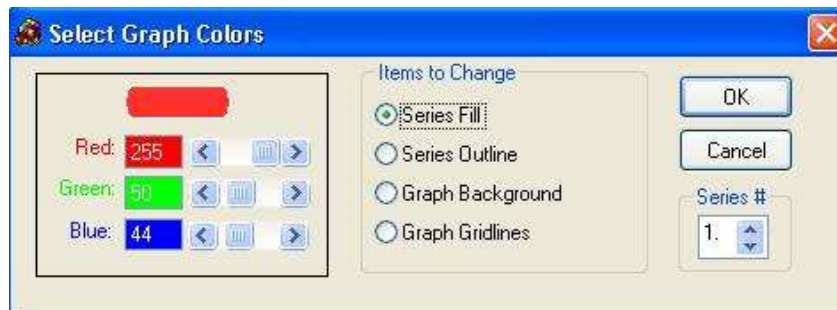
Note: You have to make the graph active first then click graph type button.



### Graph Colors

User can change the Graph Colors from this window.

Note: You have to make the graph active first then click graph colors button.



### Clipboard

User can use Clipboard to copy one graph to another application like Excel.

Note: You have to make the graph active first then click copy button.

